



# Parent Survey Results

SPRING 2006

## Kent Denver Parents Sing Our Praises

### Our Parents Say...

*"Kent Denver's greatest strength lies, without any doubt, in its superb faculty and staff."*

*"I know my child will be successful not only in college, but in life, because of the education and firm foundation he has been given at Kent Denver."*

*"The school shows a consistent vision with role models for character building as an important element woven into academics, arts and athletics... That my child is able to follow his conscience, do the right thing, and be supported by the school and his peers tells me this is the best choice for him."*

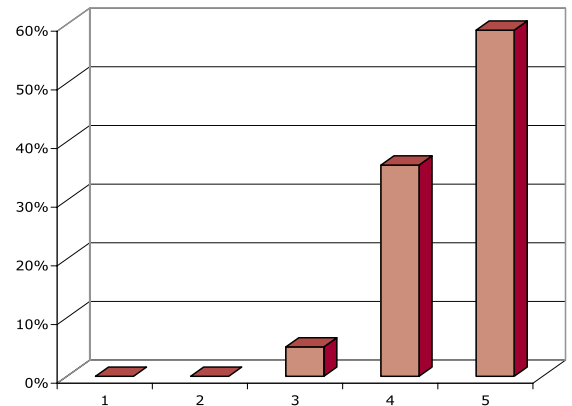
*"Even in a smaller school environment, the diversity of opportunity (technology, art, athletics, etc.) is expansive."*

*"Kent Denver promotes an inclusive environment for young adults to find the best in themselves."*

*"Kent Denver exhibits that it's true to its mission statement. My child is being educated in a wonderful, caring atmosphere by intelligent teachers."*

Parents of Kent Denver students express tremendous confidence and optimism about their children's experiences at the school. On average, parents rate their general satisfaction with Kent Denver a 4.5 on a scale of 1 to 5 (very low to very high), according to a survey conducted in late 2005.

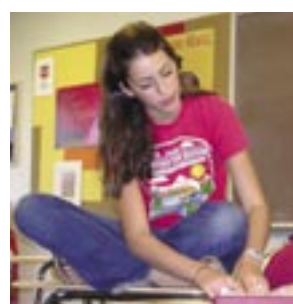
The survey asked: "Thinking in general terms, how would you rate your satisfaction with Kent Denver School?" In response, 226 parents (59%) chose the highest rating of "5," 137 parents (36%) assigned a "4," 18 parents (5%) chose a "3," one parent designated a "2," and no parents chose a "1."



## An Added Benefit

The previous Kent Denver parent survey, conducted via regular mail in March 2002 by an independent consulting firm, set new records for high levels of satisfaction among independent schools. The current survey was conducted electronically by an off-site provider. Kent Denver parents received multiple reminders—via email and postcard—during November and December 2005. In all, we received 387 responses for a 73% response rate. Such a remarkable completion rate implies a high level of investment for our parents with respect to their relationships with Kent Denver, and with the level of stability in our community.

The questionnaire was designed to measure satisfaction levels (both generally and for specific elements), attitudes about the school, and various aspects of how well we are fulfilling our mission of "excellence in scholarship and character." The broad purpose of the survey was to identify areas of strength and areas for improvement. As a result, the faculty and administration will be poised to respond more effectively to student and parent needs.



# Success in Fulfilling our Mission

## To Know Us Is To Love Us...

*The more exposure our parents have to our program, the greater their satisfaction with Kent Denver. According to the survey, parents who have more than one child at Kent Denver express greater satisfaction with the school than those with one child enrolled. In addition, the more often parents visit our campus, the more satisfied they are. And finally, almost 70% of respondents gave a high mark (either a 4 or a 5) to the sense of community for parents they experience at Kent Denver.*



## Of Note...

- Parents gave their overall experience with the Kent Denver admission process an average score of 4.5—up from 4.4 in 2002.
- Kent Denver is the top-choice school for 365 of 383 respondents.

**K**ent Denver’s mission statement was broken into its seven major components in an effort to better understand and differentiate relative success. Parents responded with scores ranging from 3.7 to 4.7.

*“In general, how successful do you feel we are in achieving each component of our vision statement, as listed below?”*

	Weighted Average	Percent 4 or 5
Excellence in		
...scholarship	4.6	96%
...and character	4.3	88%
is the goal of a Kent Denver education.		
We seek to build a		
...caring,	4.2	82%
...diverse community	3.7	58%
...of responsible citizens.	4.2	84%
To that end, the school		
...provides a challenging college preparatory program	4.7	96%
...and sets high ethical standards.	4.4	88%

## Attitudinal Measures of Agreement

**T**he survey measured parental agreement with a series of statements about Kent Denver. Among the major categories, all scores were even with or higher than the 2002 parent survey. Listed below are some of the top-rated statements about the school; ratings from the 2002 survey appear in parentheses.

• I support Kent Denver’s substance abuse policy.	4.7	(4.7)
• I would recommend Kent Denver to a friend.	4.7	(4.6)
• I am proud to say that my child attends Kent Denver.	4.6	(4.6)
• Speaking generally, Kent Denver has an excellent faculty.	4.6	(4.6)
• The quality of education at Kent Denver meets my expectations.	4.6	(4.5)
• My child is regularly challenged to meet his or her full academic potential.	4.6	(4.5)
• Kent Denver has an excellent reputation.	4.6	(4.5)
• Kent Denver actively demonstrates high regard for personal and academic honesty.	4.5	(4.5)
• I know where to go when I have a question.	4.5	(4.3)
• I am generally satisfied with the caliber of students.	4.4	(4.3)
• Positive school spirit is evident at Kent Denver.	4.4	(4.3)
• Kent Denver is successful in developing student skills in self-directed learning.	4.4	(4.3)

# Communication From the School

In all areas, the school's communication efforts received high marks — an average of 4.4 — with no single score falling below a 4.0. Areas assessed included “quantity,” “quality” and “accessibility, when sought” of communication with teachers, advisors and the Kent Denver administration. While some parents said they do not favor the school's move to an electronic/online weekly newsletter, a large majority said they found the new format much more convenient, timely and pleasing than a paper alternative. On average, the weekly *Parent Connection* received a 4.1 satisfaction rating. Among all areas in the survey, the Kent Denver website saw the most significant improvement in satisfaction rates, jumping from a 3.4 in 2002 to a 4.2 in 2005.

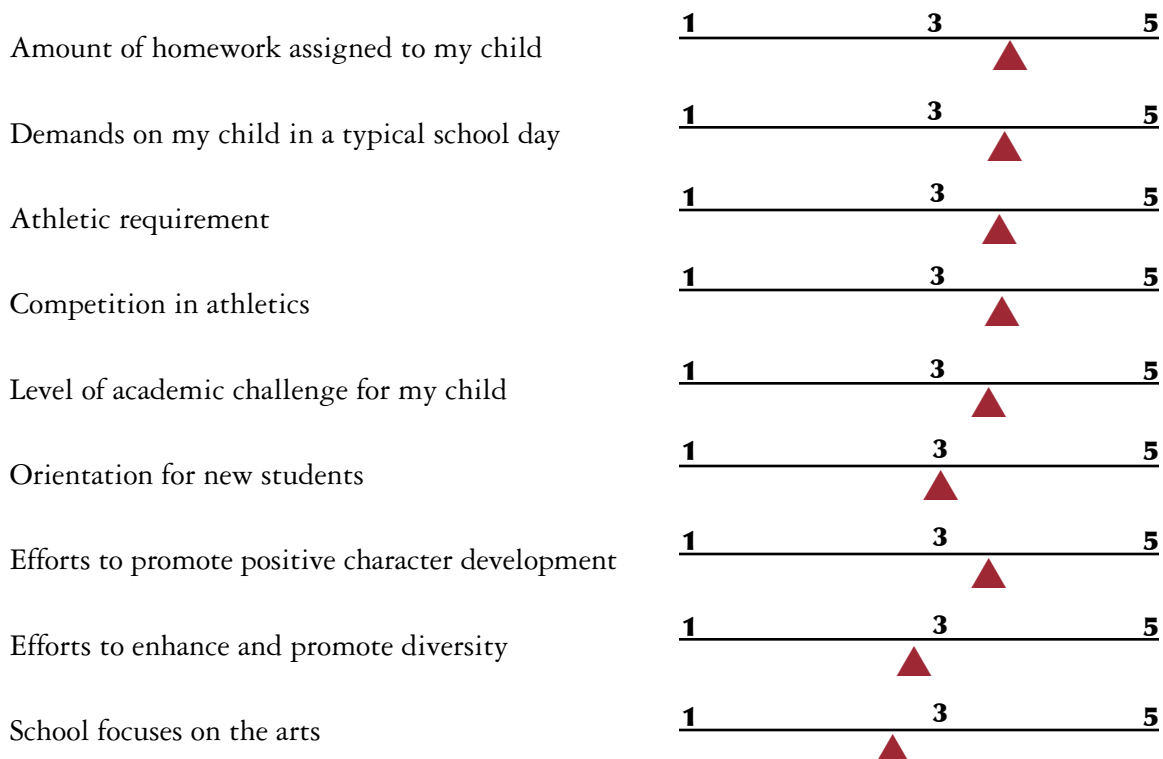


# Growth of the Child

When parents were asked to rate Kent Denver's contribution to their child's growth across a series of 15 specific areas, the top skills indicated were: learning independently (4.3), critical thinking skills (4.3), behaving ethically (4.2), working cooperatively in a group (4.2), quantitative reasoning (4.2), and writing effectively (4.1). The areas that scored the lowest in this group—representing areas for the school to work on—were appreciation for the arts (3.9), test-taking strategies (3.8), and coping with peer pressure (3.7).

# Balance in Life

Parents were asked to evaluate balance for a number of measures, with 1 representing “too little,” 3 representing an optimal “just right,” and 5 representing “too much.”



# Specific Areas of Satisfaction

## Kent Denver's Greatest Strength(s)...

*"... are the sense of community instilled among the students, the intimate and specific learning environment, and the balance between lessons from competition and pride in one's self."*

*"... is its dedication to developing the sense of the overall student, including leadership."*

*"... are the collegial atmosphere, good balance of sports, and emphasis on not only making the students excel academically but also as all-around individuals."*

*"... are the faculty and their commitment to academic and athletic excellence, the beautiful physical plant, and the faculty's desire to help students learn to be more open-minded and accepting of others."*

*"... are the small class size, the dedicated faculty, the clear and consistent expectations and values, and the fact that the school enables my child to feel supported, special and challenged during those tough middle school years."*

We have grown in several key areas since the 2002 parent survey. Overall, the average satisfaction rate with specific factors grew from 4.2 (with 81% of respondents assigning a 4 or 5 rating) in 2002 to 4.3 (with 83% of respondents assigning a 4 or 5 rating) in 2005.

Among the areas in which Kent Denver has made the most strides over the last three years are class size, physical safety/welfare of students, attention to individual student needs, availability of extra help, extracurricular activities, sense of community for students, breadth of courses offered, and coordination of curriculum between the middle school and the upper school. Key areas to study and improve include diversity, homework demands, the arts, demands of athletics, and campus upkeep.

Ratings from the 2002 survey appear in parentheses.

Specific Satisfaction	Weighted Average	Percent 4 or 5
• class size	4.8 (4.7)	98% (96%)
• physical safety and welfare of students	4.6 (4.5)	95% (90%)
• written academic comments	4.5 (4.6)	93% (93%)
• interscholastic athletics	4.5 (4.3)	88% (84%)
• parent/teacher conferences	4.4 (4.5)	89% (90%)
• availability of technology resources	4.4 (4.5)	90% (92%)
• athletic facilities (gym, fields, fitness center)	4.4 (4.4)	91% (90%)
• library resources	4.4 (4.4)	92% (92%)
• attention to individual student needs	4.4 (4.3)	87% (87%)
• clarity of expectations required for academic achievement	4.4 (4.3)	93% (87%)
• availability of extra help	4.4 (4.2)	86% (83%)
• extracurricular activities in general	4.4 (4.2)	90% (83%)
• academic facilities (classrooms, halls, commons)	4.3 (4.4)	87% (91%)
• volunteer opportunities for parents	4.3 (4.2)	83% (81%)
• emotional safety and welfare of students	4.2 (4.2)	82% (81%)
• sense of community for students	4.2 (4.1)	81% (77%)
• fairness of discipline, as applied at Kent Denver	4.2 (4.1)	82% (78%)
• community service program	4.2 (4.1)	83% (75%)
• breadth of courses offered	4.2 (4.0)	87% (81%)
• leadership opportunities for students	4.1 (4.0)	80% (77%)
• arts program	4.1 (4.0)	80% (76%)
• coordination of curriculum between MS and US	4.1 (3.8)	77% (67%)
• your volunteering experience (if applicable)	4.1 (4.1)	80% (82%)
• social events for students	4.0 (3.9)	77% (71%)
• lunch program	4.0 (3.8)	72% (65%)
• sense of community for parents	3.8 (3.7)	67% (62%)
• arts facilities (studios, theater, performing areas)	3.4 (4.1)	50% (77%)
<b>Average for this series</b>	<b>4.3 (4.2)</b>	<b>83% (81%)</b>